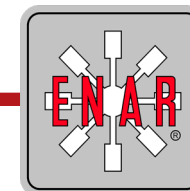


EXTERNAL VIBRATORS



ENAR offers a wide range of external vibrators, individually designed for differing modes of application such as: formwork, prefabrication/preforming concrete, the ease of materials being transported through funnels and belts for example and several other industrial uses.

The 3 ranges of External Vibrator offered by ENAR are:

- › Single-Phase external vibrators which plug directly into the mains supply.
- › 3-Phase external vibrators which plug directly into the mains supply.
- › External vibrators to be connected to high frequency converters .



QUICK CONNECTION CLAMPS

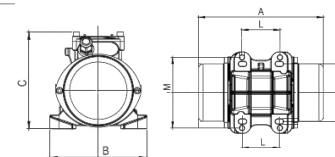
Available in 2 types of clamps, adapted to the main manufacturers of clamps.



VET RANGE

MODEL	OSCILLATIONS (rpm)	CENTRIFUGAL FORCE (Kg)	NOMINAL CURRENT (A)	DIMENSIONS AxBxC (mm)	FIXING DIMENSIONS LxM (mm)	CABLE LENGTH (m)	WEIGHT (Kg)
VET 150*	3000	187	0'35	212x150x150	70x106/130	1	5'3
VET 300*	3000	310	0'58	260x166x184	90x125/140	1	8'6
VET 600	3000	668	0'98	288x190x205	100x160	1	21

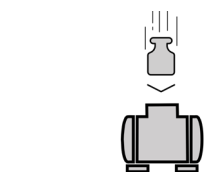
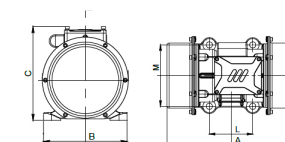
Connection: 400V 3-50Hz



VEM RANGE

MODEL	OSCILLATIONS (rpm)	CENTRIFUGAL FORCE (Kg)	NOMINAL CURRENT (A)	DIMENSIONS AxBxC (mm)	FIXING DIMENSIONS LxM (mm)	CABLE LENGTH (m)	WEIGHT (Kg)
VEM 60	3000	66	0,68	177x125x120	63'5x85÷106 63'5x82÷102	2	4'75
VEM 150*	3000	187	0'73	212x150x150	70x106/130	2	5'3
VEM 300*	3000	310	1'15	260x166x184	90x125/140	2	8'6

Connection: 230V 1-50Hz



+ Resistant
Designed to withstand falls and blows.

Highly resistant aluminium housing, allowing for a long-life span in tough working conditions



+ IP65
Protection against dust and rain.

Insulated housing



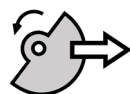
+ Complete range
A variety of models.

A complete range of single-phase, three-phase and high frequency external vibrators



+ Quick coupling
Save time setting up the external vibrator.

Several clamps available which are compatible with multiple frameworks.



+ Centrifugal force
From 60kg to 1500kg

The variety of models and modification of eccentrics meet the requirements of a wide range of working needs.

VEAF RANGE

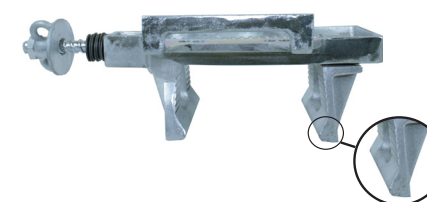
MODEL	OSCILLATIONS (rpm)	CENTRIFUGAL FORCE (Kg)	NOMINAL CURRENT (A)	DIMENSIONS AxBxC (mm)	FIXING DIMENSIONS LxM (mm)	CABLE LENGTH (m)	WEIGHT (Kg)
VEAF 650*	6000	670	7'3	249x160x126	125x90	15	6'5
VEAFP 1500	6000	1511	26	314x216x218	100x180	1	21'8

CLAMPS

The models which have a * are compatible with the connect coupling from ENAR.as



Clamp A



Clamp B